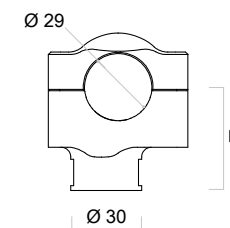




1-1/8 inch diameter handlebar risers

■	H (mm)	Ø (mm)
AZ402B	42	29
AZ403B	60	29

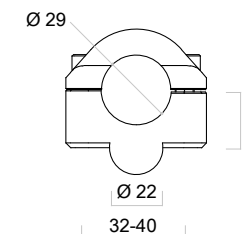
Screws included.



Riser adjustment kit for tapered handlebar

Brand	Model	Year	■	H (mm)	Ø (mm)
BMW®	R 850 R / R 1150 R	All	AZ405B	24	29
DUCAT®	MONSTER ¹	93 - 08	AZ405B	24	29
DUCAT®	MULTISTRADA 620	05 - 07	AZ405B	24	29
HONDA®	CB 650 F	15 -	AZ405B	24	29
HONDA®	CB 1000 R	08 - 10	AZ405B	24	29
HONDA®	HORNET 600 / 900	All	AZ405B	24	29
KAWASAKI®	ER-6F / ER-6N	06 - 08	AZ405B	24	29
SUZUKI®	GSR 600	06 -	AZ405B	24	29
YAMAHA®	FZ6 / FZ6 FAZER	04 -	AZ405B	24	29

¹ Except Monster 696 - 796 - 821- 1100 - S4
Screws included.



This kit allows for the mounting of 1-1/8 inch (29 mm) tapered bars to motorcycles that come with a 7/8 inch (22 mm) bar clamp integrated into the top triple clamp.



Handlebar riser Ø 25.4 mm (1 Inch)

■	H (mm)	Ø (mm)
AZ430B	42	25.4

Screws included.

